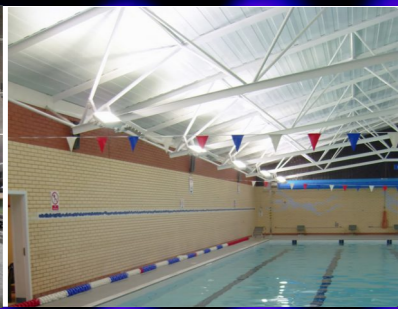
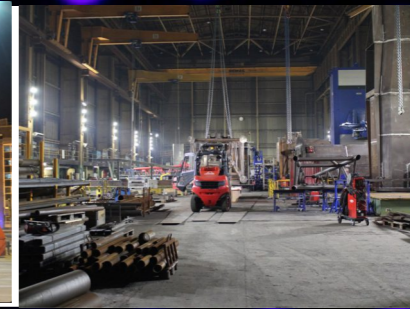


Armadillo LED - Evolution In Lighting

Tel. 0845 060 4000 Intl. +44 1371 87 69 69
Fax. 0845 060 4001 Intl. +44 1371 87 54 37

Bigods Hall | Bigods Lane | Great Dunmow | Essex | CM6 3BE | England

email: sales@armark.com web: www.armadilloLED.com online: @armadilloled



AMETHYST FLOOD LIGHT

HEAVY DUTY - INDUSTRIAL
MODULISED 30W to 300W
5 YEAR WARRANTY



© 2014 Armadillo LED - Evolution In Lighting (part of Armadillo Marketing Limited est. 1996)
All rights reserved. Reproduction in whole or in part is prohibited without the prior written consent of the copyright owner. The information presented in this document does not form part of any quotation or contract, is believed to be accurate and reliable and may be changed without notice.
No liability will be accepted by the publisher for any consequence of its use.



Key Features and Benefits:

Heavy Duty IP66 LED Flood Light -
Suitable for applications from High Masts to Petrol Station Canopies.
Flood Light - Dry Freeze up to -50°C. **Custom made availability.**

ArmadilloLED - Evolution In Lighting Amethyst LED™ Industrial Luminaire
Between 30W-300W - ONE lamp - SEVEN type of Brackets.

Robust Heavy Duty LED design.
Size from 30W up to 300W! IP66 and IK10 Rated.
High Grade Aluminium Alloy 6063-T5 used for LED Modules.
Enhanced optics and use of the CREE XP-G2 range
of high output LED chips delivers outstanding results Critical
failure protection - Two Independent power supplies for
lamps 150W - 300W as standard.

For a one design fits all angles approach, from a single product.
Simple scaling for the correct light levels by height, design and regulation,

ArmadilloLED has a modulated approach to suit every requirement
and maximise light energy efficiencies.

Enhanced optics and use of the latest CREE XP-G2 series of high output LED
delivers a genuine, cost effective LED lighting solution.

Additional control for the range can be delivered with photocells ,
microwave motion sensors , and dimming. A class leading design
from one of the UK's top LED lighting manufacturers.

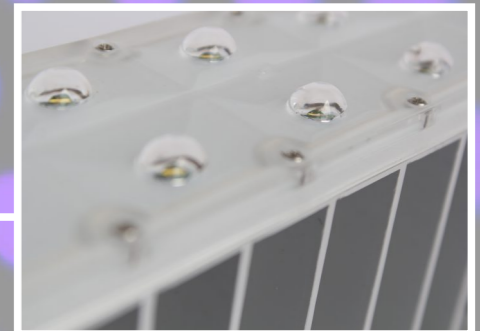
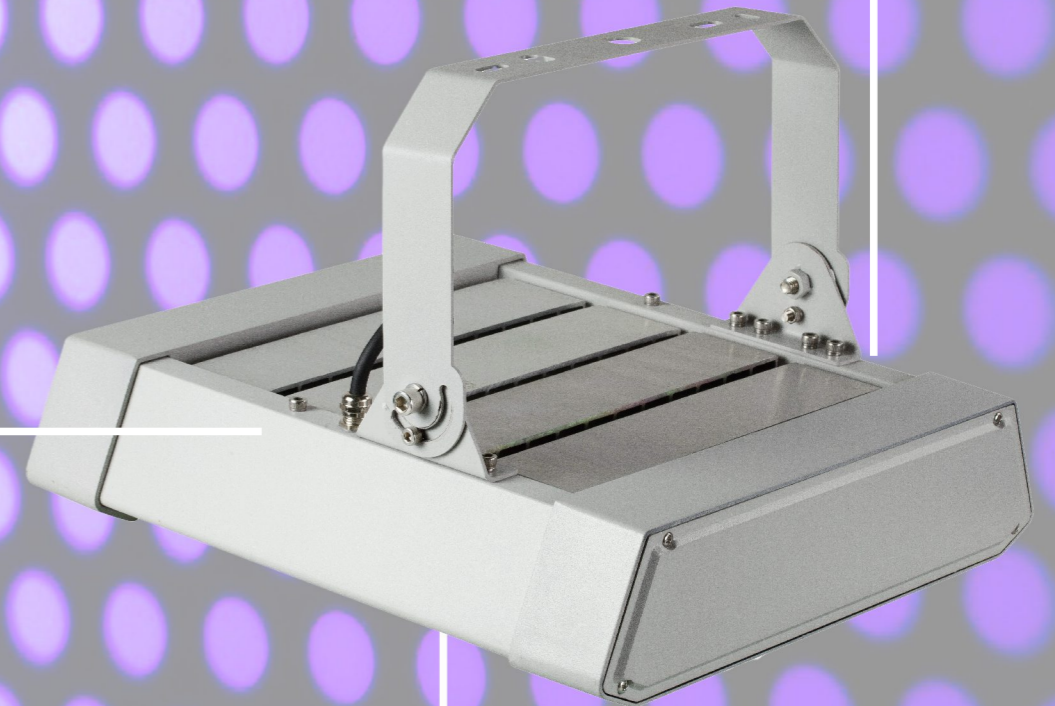
Road vibration EN 60598 tested. Salt mist, chlorine tested.

Main Features: Heavy Duty - Very Robust!

Size from 30W up to 300W!
7 Types of Brackets
IP66 and IK10 Rated
5 Year WARRANTY
High Efficiency Lumen flux - 125lm/W
Replaceable Modules (only require a screwdriver)
Replaceable Power Supply
Dimmable: (1-10V; DALI 1~255/10~100%)
Power Factor >0.92 Low Current
Easy Assembly - Fit and Forget
Many Proven Installations and Case Studies



Aluminium extrusion for great heat dissipation. IP66 rated, with standard 5 year warranty



Optical Source
PMMA Acrylic
lenses, Cree XP-G2 LED series
4000K and 5000K standard.



Modulised from 30W to 300W

Amethyst Flood Light LED Light

AME-FLA Series - Amethyst Family



Optical specification:

Colour Temp. 5000K (Option: 4000K)
 Colour Render Index >70CRI (Options: Ra>75, Ra>80)
 Light Distribution T3 Lens (Option: T3W, 20deg)
 Operating temp. -40°C ~ +50°C
 L80 F10 75000hrs

Electrical Specification:

Input voltage: 120~277V 50/60Hz (Option: 347~480V 50/60Hz)
 Power Factor: >0.95
 Drive current: 700mA
 Dimming: 1-10V, DALi, PWM Optional: (LeafNut and other CMS)

Components and materials:

LED Light source: CREE XP-G2 Series
 Power supply: Xitanium Series powered by PHILIPS or extended voltage Mean Well HVGC Series
 Housing: Die cast aluminium
 Heatsink: Extruded aluminium
 Optic Lens: PMMA
 IP rating: IP66 (BS EN 60529)
 UK rating: IK10 (BS EN 62262)

Amethyst Series Bracket Option

ONE Lamp - SEVEN Types of brackets:
FLA - Flood Light Arm
HLB - High Low Bay
CRM - Canopy Recessed Mounted

CSM - Canopy Surface Mounted
FLT - Flood Light Tilt
WM - Wall Mounted
LPM - Lamp Post Mounted



CRM



CSM



FLA



FLT



HLB



LPM

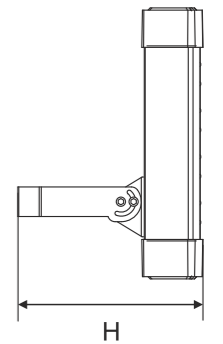
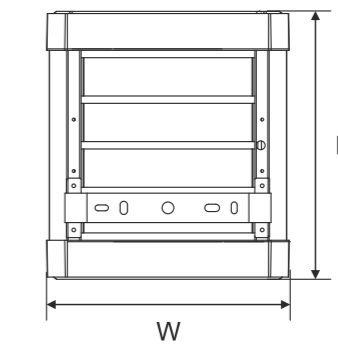
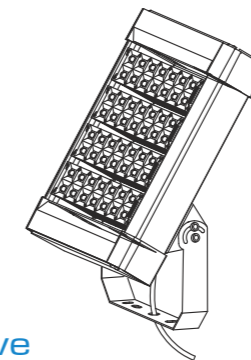


WM

General specification

Product Code	Power	# of LEDs	Lumen (5000K)	Weight (kgs)	Dimensions (mm)
AME-FLA-030	30W	1 x 14	3350	6.5	L220 x W330 x H250
AME-FLA-060	60W	2 x 14	6150	7.5	L240 x W330 x H250
AME-FLA-090	90W	3 x 14	9550	8.6	L305 x W330 x H250
AME-FLA-120	120W	4 x 14	12800	9.6	L365 x W330 x H250
AME-FLA-150	150W	5 x 14	16500	10.6	L425 x W330 x H250
AME-FLA-180	180W	6 x 14	20150	11.6	L485 x W330 x H250
AME-FLA-210	210W	7 x 14	22500	12.6	L550 x W330 x H250
AME-FLA-240	240W	8 x 14	25750	13.6	L615 x W330 x H250
AME-FLA-270	270W	9 x 14	29000	14.6	L675 x W330 x H250
AME-FLA-300	300W	10 x 14	32200	15.6	L735 x W330 x H350*

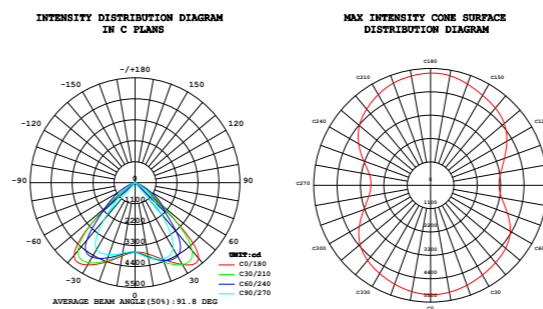
Dimension drawings



*AME-300-STRONGER BRACKET AND SECURITY RODS

Light Distribution Curve

Narrow T3 Lens (S1S112)



Wide T3W Lens (S1S113)

