

## Armadillo LED - Evolution In Lighting

Tel. 0845 060 4000 Intl. +44 1371 87 69 69  
Fax. 0845 060 4001 Intl. +44 1371 87 54 37

Bigods Hall | Bigods Lane | Great Dunmow | Essex | CM6 3BE | England

email: sales@armark.com web: www.armadilloLED.com online: @armadilloled



# AMETHYST CSM SURFACE MOUNT LED

PETROL STATION / GAS STATION  
FLAT SURFACE MOUNTING  
5 YEAR WARRANTY



© 2014 Armadillo LED - Evolution In Lighting (part of Armadillo Marketing Limited est. 1996)  
All rights reserved. Reproduction in whole or in part is prohibited without the prior written consent of the copyright owner. The information presented in this document does not form part of any quotation or contract, is believed to be accurate and reliable and may be changed without notice.  
No liability will be accepted by the publisher for any consequence of its use.



## Key Features and Benefits:

Heavy Duty IP66 LED Surface Mount Canopy Light  
Amethyst Family

With installation in mind we've developed surface mount bracket applicable for flat surface. Optionally tilt/adjustable bracket available for canopy/ceiling/wall. Please refer to Amethyst FLT Series.

For a one design fits all angles approach, from a single product. Simple scaling for the correct light levels by height, design and regulation, ArmadilloLED have a modulated approach to suit every requirement and maximise light energy efficiencies.

Enhanced optics and use of the latest CREE XP-G2 series of high output LED delivers a genuine, cost effective LED Canopy lighting solution.

Additional control for the range can be delivered with photocells, microwave motion sensors, and dimming. A class leading design from one of the UK's top LED lighting manufacturers.

Road vibration EN 60598 tested. Salt mist, chlorine tested.

High Efficiency Lumen flux - 125lm/W

Efficacy >100lm/W

IP66 and IK10 Rated

Replaceable Modules

Dimmable:

1-10V Isolated

DALI 1~255 / 10%100%

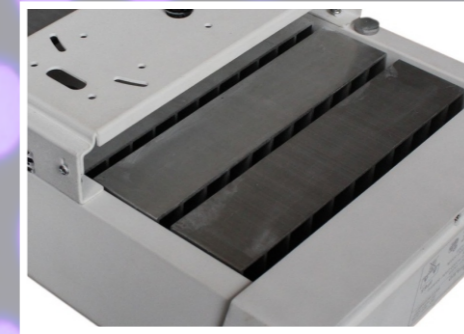
Power Factor >0.92

Low Current

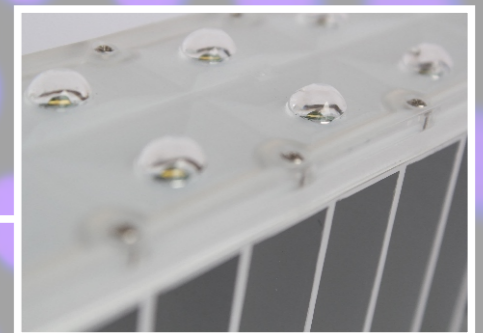
Easy Assembly



Optional adjustable bracket for sloped canopy/ceiling/wall  
See Amethyst FLT Series



Aluminium extrusion for great heat dissipation. IP66 rated, with standard 5 year warranty



Optical Source PMMA Acrylic lenses, Cree XP-G2 LED series 4000K and 5000K standard.

# Amethyst Surface Mount LED Canopy Light

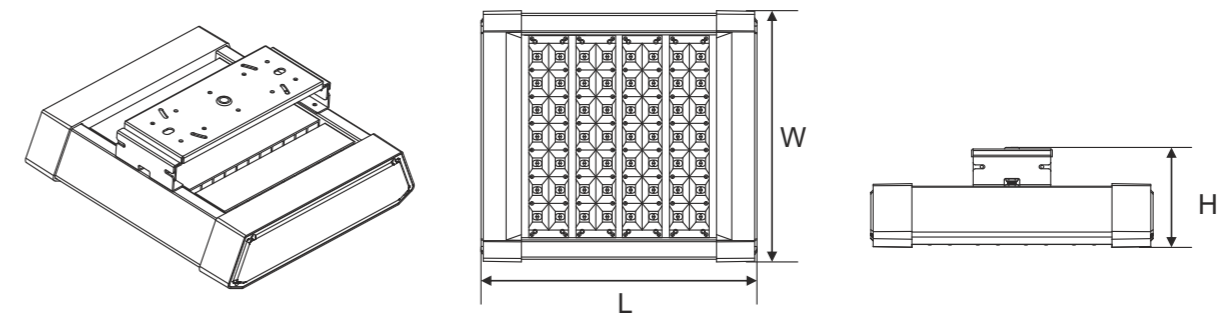
## AME-CSM Series - Amethyst Family



### General specification

Product Code	Power	# of LEDs	Lumen (5000K)	Weight (kgs)	Dimensions (mm)
AME-CRM-030	35W	1 x 14	3100	3.5	L210 x W410 x H130
AME-CRM-060	65W	2 x 14	6250	4.3	L240 x W410 x H130
AME-CRM-090	95W	3 x 14	10050	5.3	L305x W410 x H130
AME-CRM-120	125W	4 x 14	12900	6.3	L365x W410 x H130
AME-CRM-150	155W	5 x 14	16500	7.3	L425 x W410 x H130
AME-CRM-180	185W	6 x 14	20100	8.3	L485 x W410 x H130

### Dimension drawings



### Optical specification:

Colour Temp.	5000K (Option: 4000K )
Colour Render Index	>70CRI (Options: Ra>75,Ra>80
Light Distribution	T3W Lens (S1S113) (Option: T3 - S1S112)
Operating temp.	-40°C ~ +50°C
L80 F10	75000hrs

### Electrical Specification:

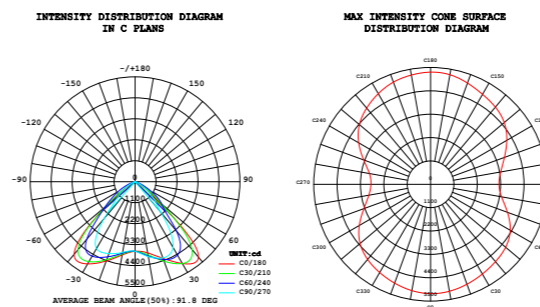
Input voltage:	120~277V 50/60Hz (Option: 347~480V 50/60Hz)
Power Factor:	>0.95
Drive current:	700mA
Dimming:	1-10V, DALI

### Components and materials:

LED Light source:	CREE XP-G2 Series
Power supply:	XANTIUM Series powered by PHILIPS
Housing:	Die cast aluminium
Heatsink:	Extruded aluminium
Optic Lens:	PMMA
IP rating:	IP66

### Light Distribution Curve

#### Narrow T3 Lens (S1S112)



#### Wide T3W Lens (S1S113)

