

Armadillo LED - Evolution In Lighting

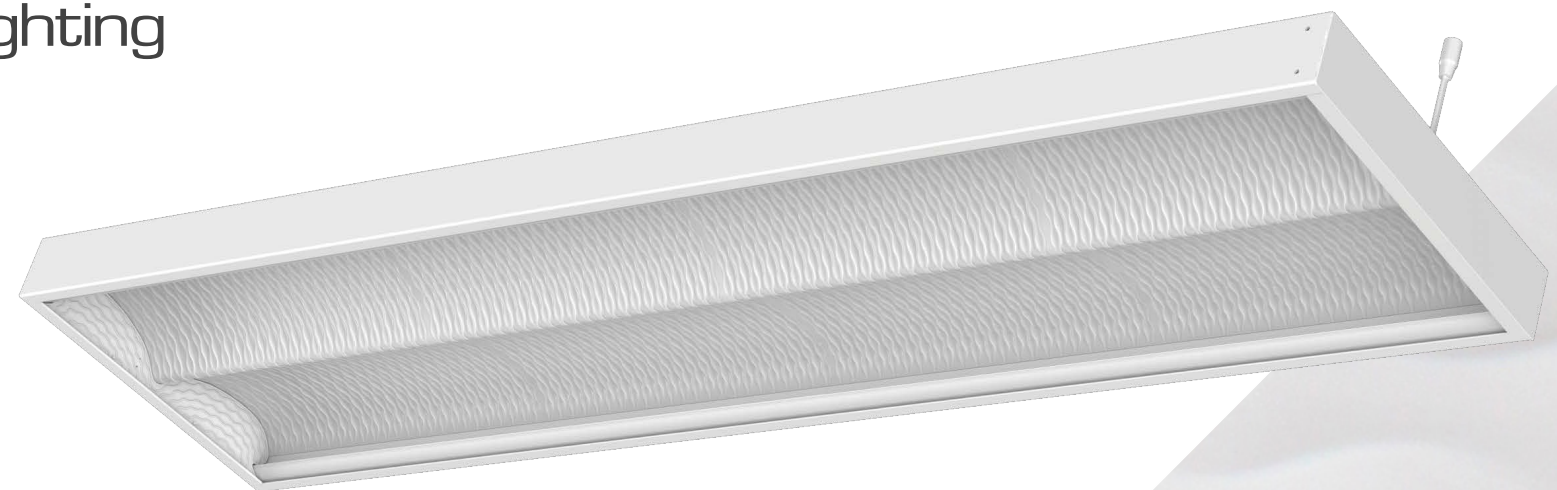
Tel. 0845 060 4000 Intl. +44 1371 87 69 69
Fax. 0845 060 4001 Intl. +44 1371 87 54 37

Bigods Hall | Bigods Lane | Great Dunmow | Essex | CM6 3BE | England

email: sales@armark.com web: www.armadilloLED.com online: @armadilloled

CelinLED Lighting

Unique Replacement for traditional grid ceiling lighting



© 2014 Armadillo LED - Evolution In Lighting (part of Armadillo Marketing Limited est. 1996)
All rights reserved. Reproduction in whole or in part is prohibited without the prior written consent of the copyright owner. The information presented in this document does not form part of any quotation or contract, is believed to be accurate and reliable and may be changed without notice.
No liability will be accepted by the publisher for any consequence of its use.



CelinLED Lighting

- LM80 Qualified
- Low dirt accumulation
- Aluminium alloy heatsink
- High efficacy reflector material
- Concealed LEDs produce very low glare

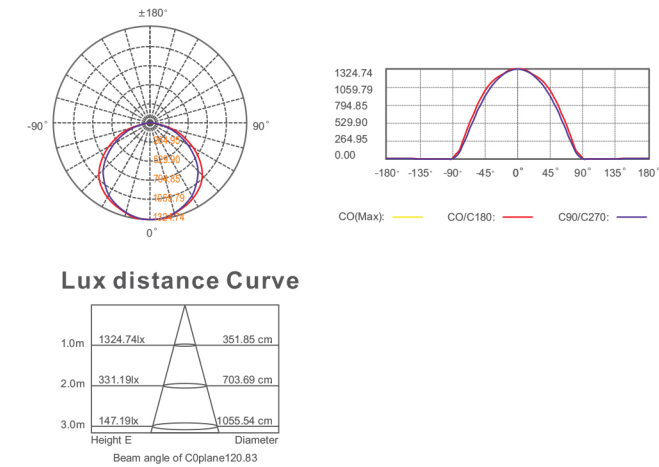
Colour Temperature: 4000k (Optional: 3000k, 5000k)
Wattage: 10W - 40W
Colour Rendering Index: >90 CRI
Lifetime: 80,000 Hours
IP Rating: IP20
Voltage: 100-240V
Driver Current: 700mA
Power Factor: >0.9
Dimming: 1-10V, DALI

European Standards Compliant
EN60598-1, EN 62471, EU 1194/874
2012, EN 12464, RoHS.
Mercury free and no IR or UV radiation.

UGR Glare

Reflectancies											
Ceiling/Cavity	70	70	50	50	30	70	70	50	50	30	
Walls	50	30	50	30	30	50	30	50	30	30	
Floor	20	20	20	20	20	20	20	20	20	20	
RoomDimensions		Viewed crosswise					Viewed endwise				
X	Y										
2H	2H	13.2	14.6	13.5	14.8	15.1	12.6	14.0	12.9	14.2	14.5
	3H	14.8	16.1	15.2	16.4	16.7	14.0	15.2	14.3	15.5	15.8
	4H	15.3	16.3	15.6	16.6	17.0	14.3	15.3	14.7	15.7	16.0
	6H	15.7	16.7	16.0	17.0	17.4	14.6	15.7	15.0	16.0	16.3
	8H	15.8	16.8	16.2	17.2	17.5	14.7	15.7	15.1	16.1	16.4
4H	12H	15.7	16.5	16.1	16.9	17.3	14.6	15.3	15.0	15.7	16.2
	2H	13.7	14.7	14.1	15.1	15.4	13.2	14.2	13.6	14.6	14.9
	3H	15.5	16.3	15.9	16.7	17.1	14.8	15.6	15.2	16.0	16.4
	4H	16.2	17.0	16.7	17.4	17.8	15.4	16.2	15.8	16.6	17.0
	6H	16.7	17.5	17.1	17.9	18.3	15.8	16.6	16.2	17.0	17.4
8H	8H	16.7	17.2	17.2	17.6	18.2	15.7	16.2	16.3	16.7	17.2
	12H	16.9	17.3	17.4	17.8	18.3	15.8	16.3	16.3	16.7	17.3
	4H	16.4	16.8	16.9	17.3	17.8	15.6	16.1	16.1	16.6	17.1
	6H	17.0	17.4	17.5	17.9	18.4	16.1	16.6	16.6	17.1	17.6
	8H	17.2	17.6	17.7	18.1	18.6	16.3	16.7	16.8	17.2	17.7
12H	12H	17.4	17.8	17.9	18.3	18.8	16.4	16.8	16.9	17.3	17.8
	4H	16.4	16.9	16.9	17.3	17.9	15.7	16.1	16.2	16.6	17.1
	6H	17.0	17.5	17.5	17.9	18.5	16.2	16.7	16.7	17.1	17.7
	8H	17.3	17.7	17.8	18.2	18.7	16.4	16.8	16.9	17.3	17.8
Variation of observer position for the luminarie distances S											
S = 1.0H		0.3/-0.6					0.3/-0.5				
S = 1.5H		0.6/-0.6					0.6/-0.7				
S = 2.0H		1.0/-0.7					0.9/-0.9				
Standard table		BK3					BK3				
Correction Summand		-1.4					-2.2				
Corrected Glare Indices referring to 1000lm Total Luminous Flux											

Light Distribution Curve (unit: cd)



Wattage: 10W
Dimensions: 295mm x 295mm
Lumens: >1700
Efficiency: >93lm/w



Wattage: 40W
Dimensions: 595mm x 595mm
Lumens: >3900
Efficiency: >98lm/w



Wattage: 30W
Dimensions: 595mm x 295mm
Lumens: >2500
Efficiency: >95lm/w

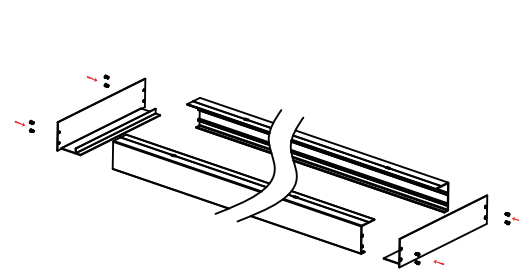


Wattage: 40W
Dimensions: 1195mm x 295mm
Lumens: >3900
Efficiency: >98lm/w

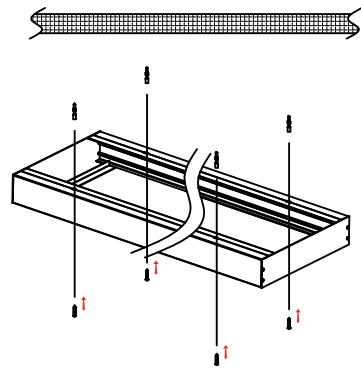
CelinLED Surface Mounting Instructions



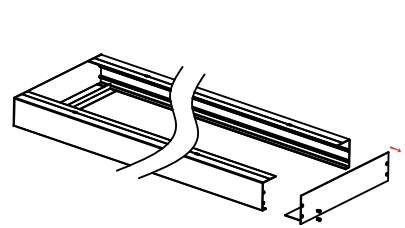
- ① Assemble the four pcs frame on the dest.



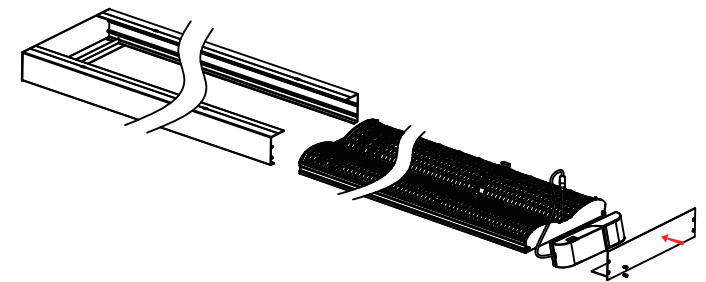
- ② Use the bolts to fasten the frame on the ceiling.



- ③ Disassemble the front cover cap.



- ④ Cut off the power supply,connect the power in put of panel with the power supply/driver, insert the panel lamp into the frames from the front side,the power supply/driver is placed on the side of the fixture,then fasten the front cover cap.



- ⑤ Plug in the power

