

(20-160W)

RAi™ LED Street Lighting
Installation and Maintenance Manual
(2018)

Contents

Precautions&Warning	-----	02
Installation		
A. Post Top Mounting	-----	03
B. Side Entry Mounting	-----	04
Wiring	-----	05
Specification	-----	06

Precautions

1. Read instructions carefully before installation and keep in for future reference.
2. Product installation, repair and maintenance must be performed when power is isolated to avoid any accident. Only a qualified electrician should install this luminaire.

Warning



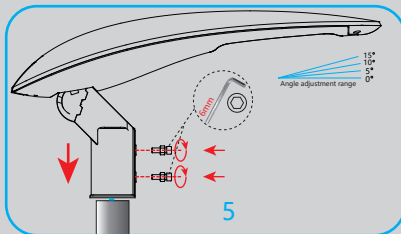
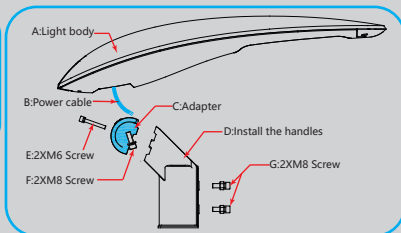
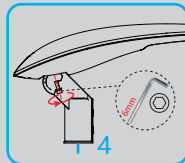
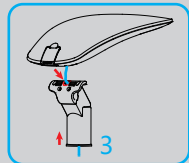
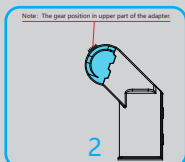
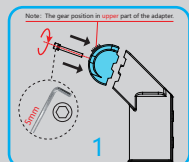
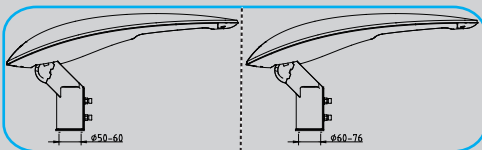
1. The luminaire shall be installed by a qualified electrician and wired in accordance with the latest IEE electrical regulations or the national requirements.
2. Do not switch on before installation is completed.
3. The luminaires must be installed vertically to the ground, and you must ensure the luminous surface is downward.
4. The luminaires mounting height 5-12m.
5. Only a qualified electrician should perform maintenance on this luminaire.
6. The luminaires maximum projected area: EL-SL18M is 0.144m², EL-SL18L is 0.246m².
7. This marking indicates that this product should not be disposed with other household wastes throughout the EU. To prevent possible harm to the environment or human health from uncontrolled waste disposal, recycle it responsibly to promote the sustainable reuse of material resources.



Installation

A. Post Top Mounting

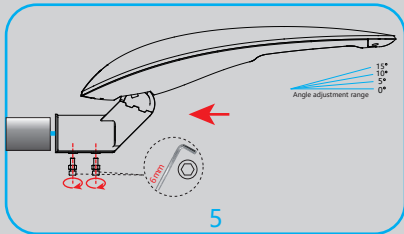
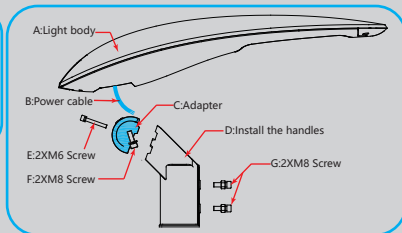
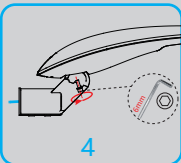
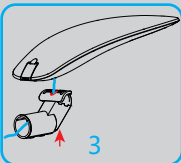
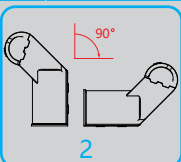
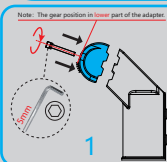
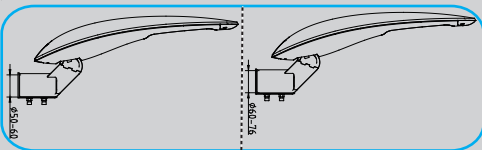
1. Using a 5mm allen key, fix the bracket base point to the bracket arm.
2. Note that the gear position is facing towards the upper part of the bracket.
3. Position the bracket arm onto the luminaire and align the mounting holes.
4. Using a 6mm allen key, fix the bracket to the luminaire.
5. Using a 6mm allen key, fix the luminaire to the lighting column.



Installation

B. Side Entry Mounting

1. Using a 5mm allen key, fix the bracket base point to the bracket arm.
2. Note that the gear position is facing towards the lower part of the bracket.
3. Position the bracket arm onto the luminaire and align the mounting holes.
4. Using a 6mm allen key, fix the bracket to the luminaire.
5. Using a 6mm allen key, fix the luminaire to the lighting column.



Wiring

1. Connect luminaire cables as per the wiring diagram below using methods that comply with all applicable codes.
2. Turn power on.

A. European Standard Power Cable

