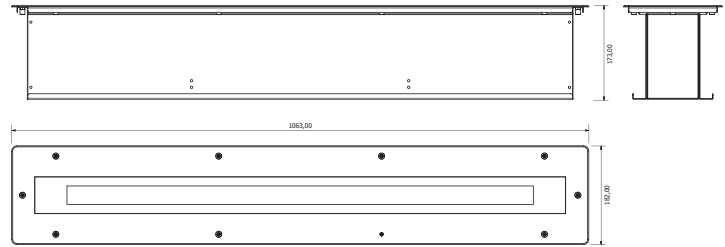
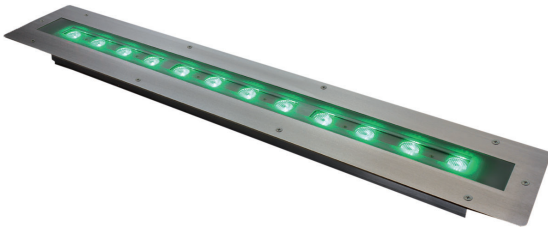


Chameleon IG Bar

INGROUND LED LINEAR BAR

PRODUCT SPECIFICATION SHEET



PRODUCT:

The Chameleon IG Bar is a new version of the Chameleon line. INGROUND LED linear bar which combines aesthetic and resistance with ideal performance in a versatile projector.

IP67 - Waterproof and tremendously resistant.

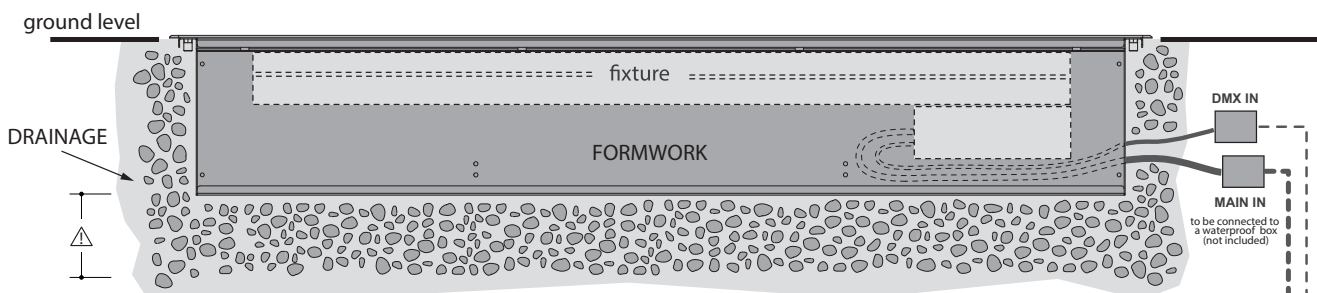
Available in RGBW/FC and MONOCHROMATIC light source as well as in WHITE BALANCE. RDM / DMX Protocol. Configuration by DRS Setup.

FEATURES:

- Total light power: 40W
- Lumen: R 750, G 1100, B 230, W 1600
- Optics: medium beam (38 mm lenses)
- Power consumption: 45W
- Voltage range: Universal 100 - 240Vac
- Frequency range: 47-63Hz
- Current: 0.2A@230VAC
- Active power factor: PF>0.97@230VAC
- Physical: 1063x182x133 mm
- Weight: 15 kg
- Control: Standard interface: RS-485, Protocol: RDM / DMX 512
- Connections: Signal: 3pin cable 70cm, possibility to link up to 32 devices in chain
- Available as accessories: Wireless DMX receiver Main Power: 3pin cable 70cm. possibility to link up to 8 devices at 230V or 4 devices at 120V in chain.
- Setup: RDM Control/configuration or individually by DRS (remote control device) Dedicated DMX channel for white balance, DMX or Auto mode with Master-Slave function Intelligent temperature control Halogen simulation CYM simulation Flicker-free function Smooth dimming function

INSTALLATION:

⚠ NOT SUITABLE FOR VEHICLES
NON CARRABILE



⚠ Be sure to create sufficient drainage around the formwork.
Assembly operations must be carried out by qualified personnel.