

Armadillo LED - Evolution In Lighting

Tel. 0845 060 4000 Intl. +44 1371 87 69 69
Fax. 0845 060 4001 Intl. +44 1371 87 54 37

Bigods Hall | Bigods Lane | Great Dunmow | Essex | CM6 3BE | England

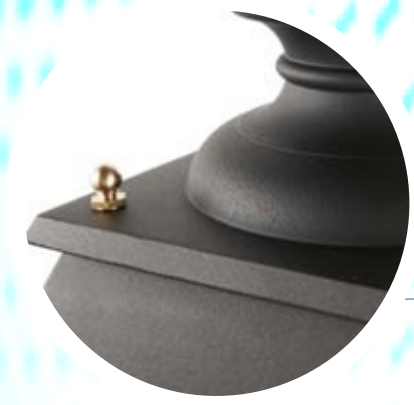
email: sales@armark.com web: www.armadilloLED.com online: @armadilloled

Heritage LED Courtyard Lighting Photocell & CMS Ready



© 2014 Armadillo LED - Evolution In Lighting (part of Armadillo Marketing Limited est. 1996)
All rights reserved. Reproduction in whole or in part is prohibited without the prior written consent of the copyright owner. The information presented in this document does not form part of any quotation or contract, is believed to be accurate and reliable and may be changed without notice.
No liability will be accepted by the publisher for any consequence of its use.

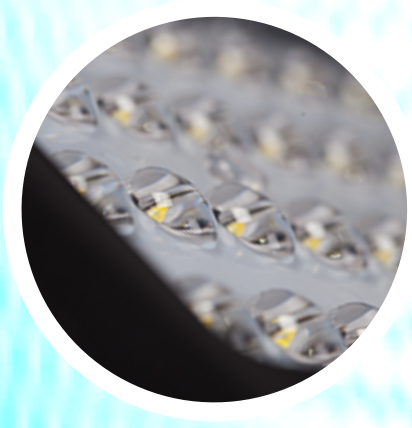




Solid Aluminum Housing
Gravity die-cast aluminum housing
available in any colour



High Protection
10KV surge protection,
waterproof connections



Optics & photometrics
Unique optics optimise the light
distribution to comply with road
lighting standards.



Power Supply
Worldwide certified universal
input voltage and frequency



Leds
High reliability and performance powered by
the best LED light source supplier;
LM-80 compliant;
L80F10 - 60,500hrs lifetime and lumen maintenance.

Heritage LED Courtyard Lighting

Heritage LED Courtyard Lighting



Dusk till dawn Light sensor UL LISTED (optional)

- IP66 Rated
- Compliance with BS EN 60598-1
- The optical system of the Luminaire of IP rating in accordance with BSEN 60529
- Glare class in accordance with BS EN 13201
- Compliance with BS EN 13201
- Extended 5 Year Warranty

Optical specification:

Colour Temp.	4000K (Optional: 3000K, 5000K)
Colour Render Index	>80CRI
Operating temp.	-30°C ~ +60°C
L80 F10	60,500hrs

Electrical Specification:

Input voltage:	120~277V 50/60Hz (Option: 347~480V 50/60Hz)
Power Factor:	>0.95
Drive current:	700mA
Dimming:	1-10V, DALi, PWM Optional

Components and materials:

LED Light source:	CREE XP-G3 Series
Power supply:	Extended voltage Mean Well HLG Series
Housing:	Die cast aluminium
Heatsink:	Built In Thermal Management
Optic Lens:	PMMA
IP rating:	IP66 (BS EN 60529)

Ease of install and application, fit and forget. Simple scaling for the correct light levels by height, design and regulation. ArmadilloLED have a modularised approach to suit every lighting criteria, to maximise light energy efficiencies.

Enhanced optics and use of the latest CREE XP-G3 range of high output LED chips delivers, at last, a genuine cost effective LED Lighting solution. Ideal for Courtyard, Parks, Plazas, Sidewalks, Residential roads, City centres and historical areas, Cycle and pedestrian passes. Additional control for the range can be delivered with integrated photocell and dimming, a class leading design from one of the UK's top LED lighting manufacturers.

Key Features and Benefits:

Mechanical structure and thermal management
Combines historical appearance with modern lighting technology
Easy assembly, easy installation, and low maintenance.
Flexible wattage options

Electrical and optics

Wattage options – available in 30W, 45W and 60W

- 4000k Kelvin colour temperature as standard
- Choose from input voltage solutions – 120~277Vac, 220~240Vac, 347-480Vac.
- Optional UNIQUE 480V+ Single / Three Phase Voltage protection (switch-off to stand by - 15 sec. restart mode)

LED technology with higher system efficacy achieving up to 60% or more energy savings than typical conventional HPS lighting solutions.

- Unique optics and photometric designs optimize the light distribution to comply with safety and road lighting standards in terms of illuminance, luminance, uniformity & glare control, successfully retrofitting HPS road lighting solutions.

- Dynamic dimming options allows further significant energy savings during off peak hours.
- Optional intelligent wireless road lighting management system.

UL Listed interface for the NEMA photoelectric control unit (PECU).

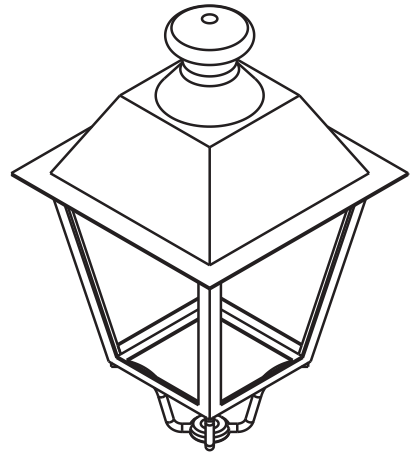
Top assured safety and performance - UL E364004, FCC, CSA, TUV-GS CE, CB, RoHS, LM-79, LM-80

High reliability and high performance LED light source and LED power supply.

5 Years standard warranty as standard for complete luminaire with photocell

CMS Management - Suitable for additional CMS control system to be built inside the lamp.

Heritage LED Courtyard Lighting



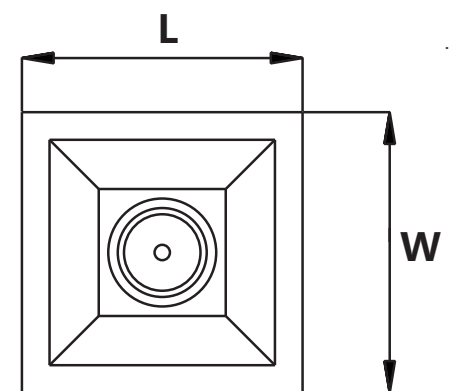
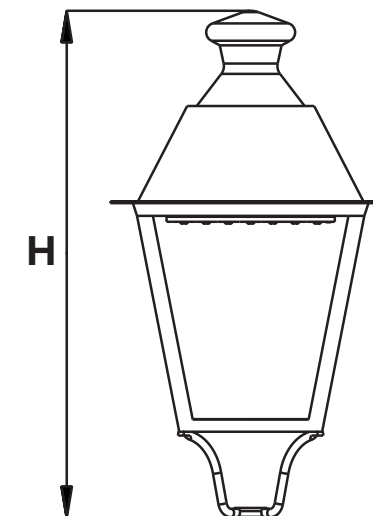
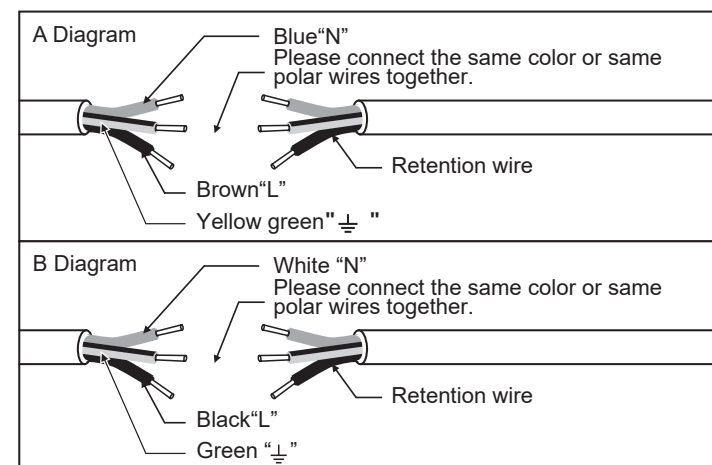
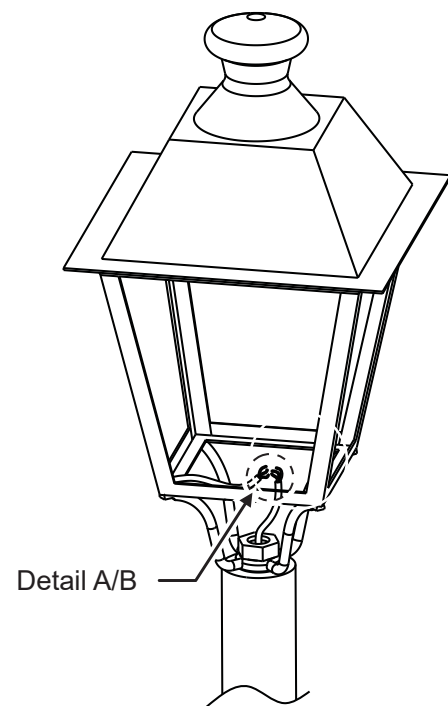
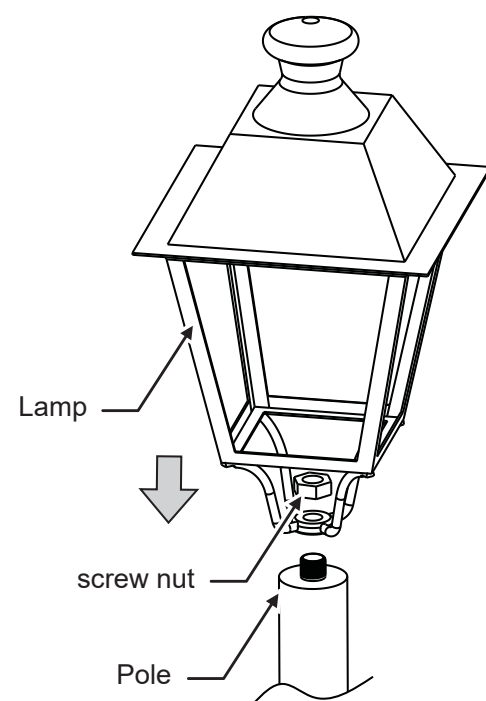
Model No.	Input Voltage	Power Supply Frequency	Power Rating	Net Weight
Heritage-030	120-277VAC	50Hz/60Hz	30W	8.2kg
Heritage-045	120-277VAC	50Hz/60Hz	45W	8.2kg
Heritage-060	120-277VAC	50Hz/60Hz	60W	8.2kg

Installation Instructions

- 1 First, plug the lamp into the arm as shown in picture, then lock the nut.
- 2 Connect power line to withstand no less than 300/500V voltage and have a waterproof protection. The sectional area of the copper core should be no less than 1.0mm². The details of wiring refer to detail A/B. (please choose according to the actual color of power line.)

Model No.	L	W	H
Heritage-030	425	425	770
Heritage-045	425	425	770
Heritage-060	425	425	770

unit: mm



Warning: Luminaire must not be directly installed on the surface of any flammable material in any circumstance. Warning: If outer flexible cables of luminaire are damaged, only the manufacturer, its agent or eligible people can replace them to avoid accident. Warning: Ensure power is isolated before installation in case of electrical shock.

Statement: The optics radiation of this luminaire comply with "exemption level" requirements in IEC62471-2006

