

ELLIPSE 2.0 LED

LED Street Lighting

PRODUCT SPECIFICATION SHEET



PRODUCT:

The Ellipse 2.0 is a cost effective retrofit solution for HPS bulbs. Featuring a 360° wide beam angle design, the Ellipse 2.0 is the same size as a traditional HID bulb to allow for easy retrofitting in any housing type. Long life LEDs, coupled with a high-efficiency driver, provide superior quality of illumination for extended service life. Rated to deliver LM80 performance for 50,000 hours. Separate screw adapter to switch between E26/E27 and E39/E40.

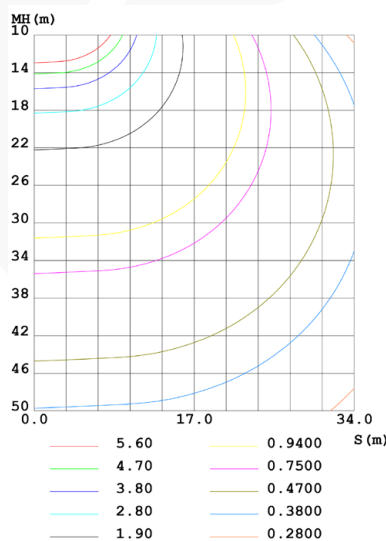
Easily retrofit existing street lights with the Ellipse LED bulb, saving time and money when it comes to upgrading to this unique energy saving, lighter and higher efficiency LED solution.

Supplied with 5 year Warranty as standard.

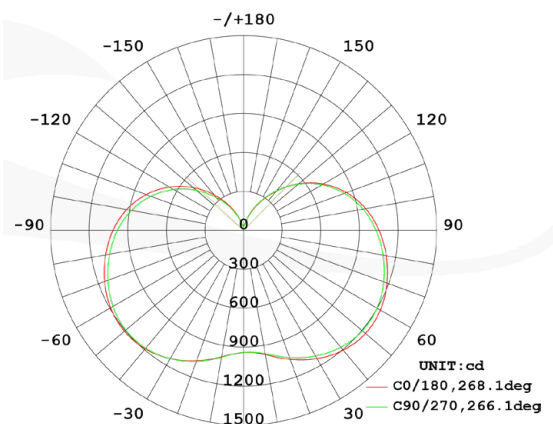
DETAILS:

Colour Temperature:
4000K
 Optional: 2700K, 3000K, 5000K
 Wattage:
25W-70W
 Lifetime:
>50.000 Hours
 IP Rating:
IP65 (Weatherproof)
 Voltage:
AC100-277V 50/60Hz
 Beam Angle:
360°
 Efficacy In.Flux:
>160lm/w
 Power Factor:
>0.95
 Operating Temperature:
- 30°C ~ +50°C
 Surge Protection:
4kV

C0 Plane Isolux Diagram (Unit: 1x)



Luminous Intensity Distribution Diagram



PRODUCT	TESTED POWER (W)	NOMINAL FLUX (lm)	EFFICIENCY (lm/W)	INRUSH CURRENT measured at 50% I _{peak}	WEIGHT (kg)	DIMENSIONS (mm)
Ellipse LED 2.0-25W 4000K	25	4150	166	25W – 26A t _{width} = 50 μs	0.435	H180 x DIA80
Ellipse LED 2.0-50W 4000K	44	7175	163	45W – 30A t _{width} = 250 μs	0.805	H230 x DIA100
Ellipse LED 2.0-70W 4000K	69	11070	160	75W – 34A t _{width} = 250 μs	1.505	H300 x DIA125

PACKAGING:

PRODUCT	INNER CARTON PCS	SIZE (mm) LxWxH	OUTER CARTON PCS	SIZE (mm) LxWxH
Ellipse LED 2.0-25W 4000K	1	217×102×102	9	326×234×340
Ellipse LED 2.0-50W 4000K	1	275×122×129	9	380×290×412
Ellipse LED 2.0-70W 4000K	1	320×161×167	6	498×335×359