

ARMARK GLASS INGROUN

- Product type: **LED Tile Lights**
- Materials: **316 Stainless steel housing, High-strength tempered textured glass cover**
- Glass Thicknesses Available: **12, 15 or 19mm**
- IP Rating: **IP67**
- IK Rating: **IK10**
- Warranty: **3 Years**
- Input voltage: **DC24**
- Light source: **Cree, Osram, Lumileds, Nichia**
- CCT: **3000K/4000K/5000K CRI: Ra>80**
- Light emission: **120°**
- Control: **ON/OFF, DMX512**
- Life-span: **50000Hrs**
- Operating Temperature: **-30°C + 65°C**
- Classification: **III**
- Installation: **Embedded buried installation (recessed box required)**

LUMINAIRE SIZE RANGE:

Light Emitting Surface:

[100x100 mm](#)

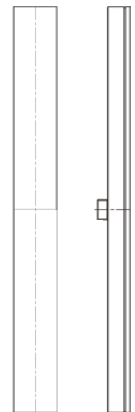
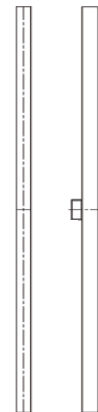
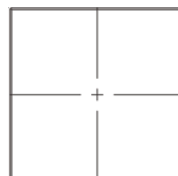
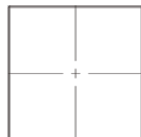
[200x100 mm](#)

[200x200 mm](#)

[300x300 mm](#)

[1000x28 mm](#)

[1000x100 mm](#)



Overall Dimensions:

L105*W105
*H116mm

L205*W105
*H116mm

L205*W205
*H116mm

L305*W305
*H116mm

L1005*W33
*H116mm

L1005*W105
*H116mm

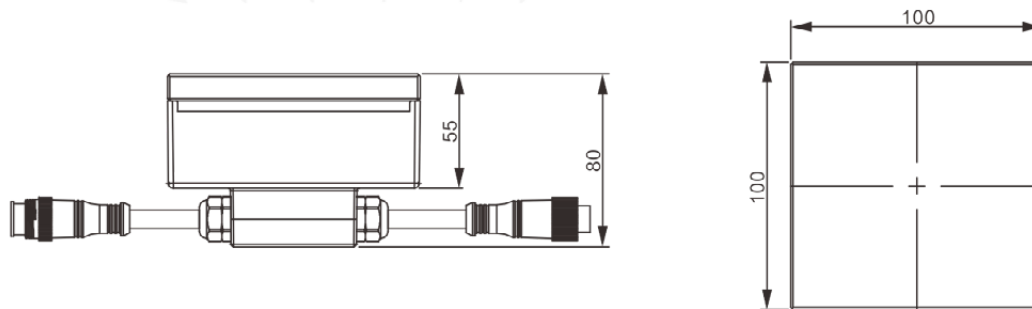


WW	Warm White
NW	Natural White
CW	Cold White
R	Red
G	Green
B	Blue
A	Amber
RGBW	RGB + White
RGBA	RGB + Amber

ARMARK GLASS BRICK 100x100

- Product type: **LED Tile Light**
- Materials: **316 Stainless steel housing, High-strength tempered textured glass cover**
- Glass Thicknesses Available: **12, 15 or 19mm**
- Dimension: **L100*W100*H80mm**
Overall: **L105*W105*H116mm**
- IP Rating: **IP67**
- IK Rating: **IK10**
- Warranty: **3 Years**
- Input voltage: **DC24V**
- Light source: **Cree, Osram, Lumileds, Nichia**
- CCT: **3000K/4000K/5000K CRI: Ra>80**
- Light emission: **120°**
- Control: **ON/OFF, DMX512**
- Life-span: **50000Hrs**
- Operating Temperature: **-30°C + 65°C**
- Classification: **III**
- Installation: **Embedded buried installation (recessed box required)**

DRAWINGS:



PRODUCT DETAILS:

PART NUMBER	DIMENSION (MM)	POWER	VOLTAGE	COLOUR
ARM-BRI100X100WD2	L100*W100*H80	1.3W	DC24V	WW/NW/CN
ARM-BRI100X100SD2	L100*W100*H80	1.3W	DC24V	R/G/B/A
ARM-BRI100X100RGBD2	L100*W100*H80	1.3W	DC24V	RGB
ARM-BRI100X100RGBWD2	L100*W100*H80	1.3W	DC24V	RGBW
ARM-BRI100X100RGBAD2	L100*W100*H80	1.3W	DC24V	RGBA

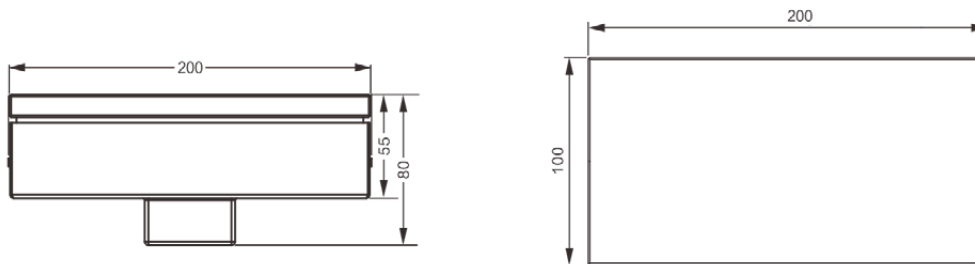


WW	Warm White
NW	Natural White
CW	Cold White
R	Red
G	Green
B	Blue
A	Amber
RGBW	RGB + White
RGBA	RGB + Amber

ARMARK GLASS BRICK 200x100

- Product type: **LED Tile Light**
- Materials: **316 Stainless steel housing, High-strength tempered textured glass cover**
- Glass Thicknesses Available: **12, 15 or 19mm**
- Dimension: **L200*W100*H80mm**
Overall: **L205*W105*H116mm**
- IP Rating: **IP67**
- IK Rating: **IK10**
- Warranty: **3 Years**
- Input voltage: **DC24V**
- Light source: **Cree, Osram, Lumileds, Nichia**
- CCT: **3000K/4000K/5000K CRI: Ra>80**
- Light emission: **120°**
- Control: **ON/OFF, DMX512**
- Life-span: **50000Hrs**
- Operating Temperature: **-30°C + 65°C**
- Classification: **III**
- Installation: **Embedded buried installation (recessed box required)**

DRAWINGS:



PRODUCT DETAILS:

PART NUMBER	DIMENSION (MM)	POWER	VOLTAGE	COLOUR
ARM-BRI200X100WD2	L200*W100*H80	2.6W	DC24V	WW/NW/CN
ARM-BRI200X100SD2	L200*W100*H80	2.6W	DC24V	R/G/B/A
ARM-BRI200X100RGBD2	L200*W100*H80	2.6W	DC24V	RGB
ARM-BRI200X100RGBWD2	L200*W100*H80	2.6W	DC24V	RGBW
ARM-BRI200X100RGBAD2	L200*W100*H80	2.6W	DC24V	RGBA

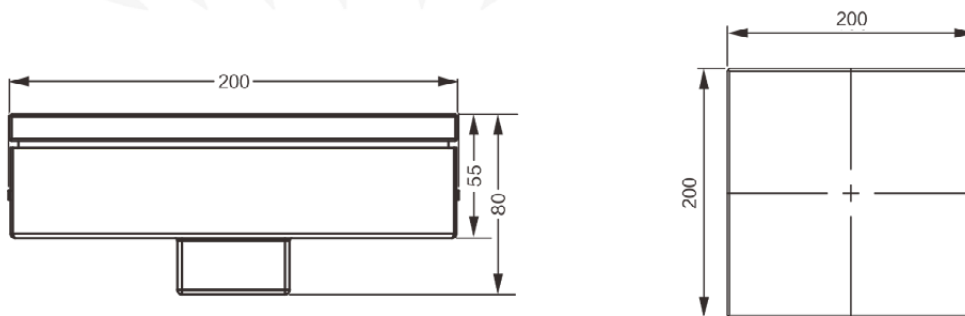


WW	Warm White
NW	Natural White
CW	Cold White
R	Red
G	Green
B	Blue
A	Amber
RGBW	RGB + White
RGBA	RGB + Amber

ARMARK GLASS BRICK 200x200

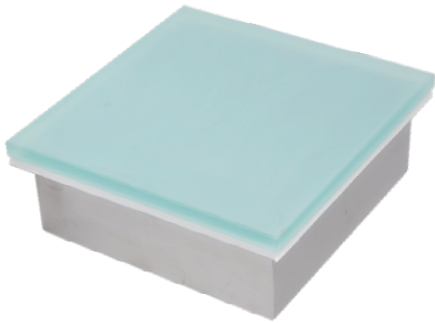
- Product type: **LED Tile Light**
- Materials: **316 Stainless steel housing, High-strength tempered textured glass cover**
- Glass Thicknesses Available: **12, 15 or 19mm**
- Dimension: **L200*W200*H80mm**
Overall: **L205*W205*H116mm**
- IP Rating: **IP67**
- IK Rating: **IK10**
- Warranty: **3 Years**
- Input voltage: **DC24V**
- Light source: **Cree, Osram, Lumileds, Nichia**
- CCT: **3000K/4000K/5000K CRI: Ra>80**
- Light emission: **120°**
- Control: **ON/OFF, DMX512**
- Life-span: **50000Hrs**
- Operating Temperature: **-30°C + 65°C**
- Classification: **III**
- Installation: **Embedded buried installation (recessed box required)**

DRAWINGS:



PRODUCT DETAILS:

PART NUMBER	DIMENSION (MM)	POWER	VOLTAGE	COLOUR
ARM-BRI200X200WD2	L200*W200*H80	4W	DC24V	WW/NW/CN
ARM-BRI200X200SD2	L200*W200*H80	4W	DC24V	R/G/B/A
ARM-BRI200X200RGBD2	L200*W200*H80	4W	DC24V	RGB
ARM-BRI200X200RGBWD2	L200*W200*H80	4W	DC24V	RGBW
ARM-BRI200X200RGBAD2	L200*W200*H80	4W	DC24V	RGBA

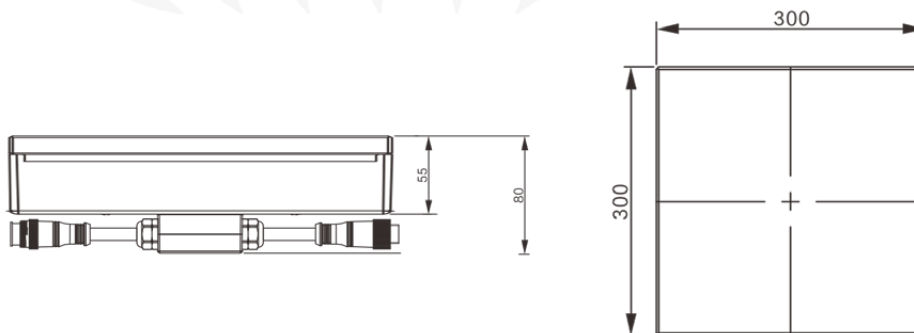


WW	Warm White
NW	Natural White
CW	Cold White
R	Red
G	Green
B	Blue
A	Amber
RGBW	RGB + White
RGBA	RGB + Amber

ARMARK GLASS BRICK 300x300

- Product type: **LED Tile Light**
- Materials: **316 Stainless steel housing, High-strength tempered textured glass cover**
- Glass Thicknesses Available: **12, 15 or 19mm**
- Dimensions: **L300*W300*H80mm**
Overall: **L305*W305*H116mm**
- IP Rating: **IP67**
- IK Rating: **IK10**
- Warranty: **3 Years**
- Input voltage: **DC24V**
- Light source: **Cree, Osram, Lumileds, Nichia**
- CCT: **3000K/4000K/5000K CRI: Ra>80**
- Light emission: **120°**
- Control: **ON/OFF, DMX512**
- Life-span: **50000Hrs**
- Operating Temperature: **-30°C + 65°C**
- Classification: **III**
- Installation: **Embedded buried installation (recessed box required)**

DRAWINGS:



PRODUCT DETAILS:

PART NUMBER	DIMENSION (MM)	POWER	VOLTAGE	COLOUR
ARM-BRI300X300WD2	L300*W300*H80	7.8W	DC24V	WW/NW/CN
ARM-BRI300X300SD2	L300*W300*H80	7.8W	DC24V	R/G/B/A
ARM-BRI300X300RGBD2	L300*W300*H80	7.8W	DC24V	RGB
ARM-BRI300X300RGBWD2	L300*W300*H80	7.8W	DC24V	RGBW
ARM-BRI300X300RGBAD2	L300*W300*H80	7.8W	DC24V	RGBA

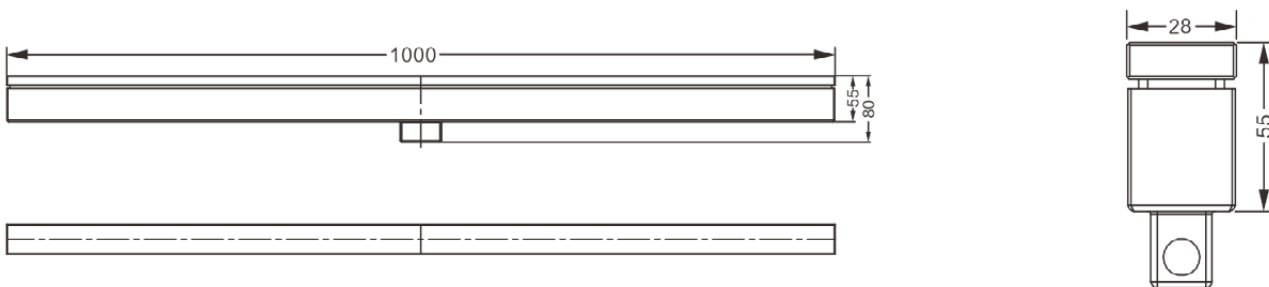


WW	Warm White
NW	Natural White
CW	Cold White
R	Red
G	Green
B	Blue
A	Amber
RGBW	RGB + White
RGBA	RGB + Amber

ARMARK INGROUN 1000x28

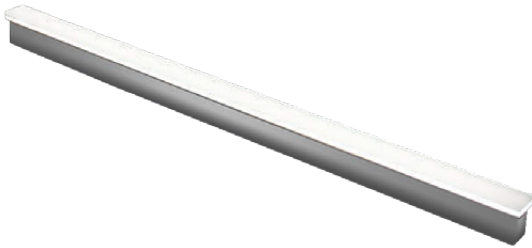
- Product type: **LED Tile Light**
- Materials: **316 Stainless steel housing, High-strength tempered textured glass cover**
- Glass Thicknesses Available: **12, 15 or 19mm**
- Dimensions: **L1000*W28*H80mm**
Overall: **L1005*W33*H116mm**
- IP Rating: **IP67**
- IK Rating: **IK10**
- Warranty: **3 Years**
- Input voltage: **DC24V**
- Light source: **Cree, Osram, Lumileds, Nichia**
- CCT: **3000K/4000K/5000K CRI: Ra>80**
- Light emission: **120°**
- Control: **ON/OFF, DMX512**
- Life-span: **50000Hrs**
- Operating Temperature: **-30°C + 65°C**
- Classification: **III**
- Installation: **Embedded buried installation (recessed box required)**

DRAWINGS:



PRODUCT DETAILS:

PART NUMBER	DIMENSION (MM)	POWER	VOLTAGE	COLOUR
ARM-ING1000X28WD2	L1000*W28*H80	9W	DC24V	WW/NW/CN
ARM-ING1000X28SD2	L1000*W28*H80	9W	DC24V	R/G/B/A
ARM-ING1000X28RGBD2	L1000*W28*H80	9W	DC24V	RGB
ARM-ING1000X28RGBWD2	L1000*W28*H80	9W	DC24V	RGBW
ARM-ING1000X28RGBAD2	L1000*W28*H80	9W	DC24V	RGBA

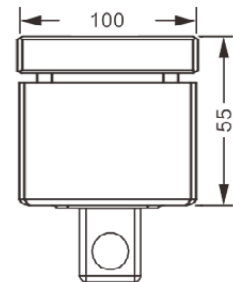
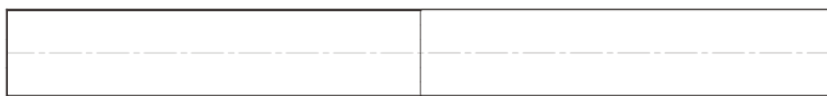
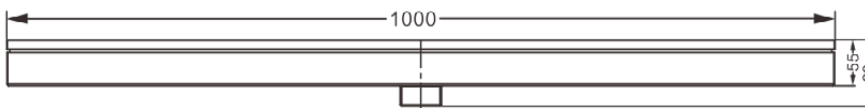


WW	Warm White
NW	Natural White
CW	Cold White
R	Red
G	Green
B	Blue
A	Amber
RGBW	RGB + White
RGBA	RGB + Amber

ARMARK INGROUN 1000x100

- Product type: **LED Tile Light**
- Materials: **316 Stainless steel housing, High-strength tempered textured glass cover**
- Glass Thicknesses Available: **12, 15 or 19mm**
- Dimensions: **L1000*W100*H80mm**
Overall: **L1005*W105*H116mm**
- IP Rating: **IP67**
- IK Rating: **IK10**
- Warranty: **3 Years**
- Input voltage: **DC24V**
- Light source: **Cree, Osram, Lumileds, Nichia**
- CCT: **3000K/4000K/5000K CRI: Ra>80**
- Light emission: **120°**
- Control: **ON/OFF, DMX512**
- Life-span: **50000Hrs**
- Operating Temperature: **-30°C + 65°C**
- Classification: **III**
- Installation: **Embedded buried installation (recessed box required)**

DRAWINGS:



PRODUCT DETAILS:

PART NUMBER	DIMENSION (MM)	POWER	VOLTAGE	COLOUR
ARM-ING1000X100WD2	L1000*W100*H80	15W	DC24V	WW/NW/CN
ARM-ING1000X100SD2	L1000*W100*H80	15W	DC24V	R/G/B/A
ARM-ING1000X100RGBD2	L1000*W100*H80	15W	DC24V	RGB
ARM-ING1000X100RGBWD2	L1000*W100*H80	15W	DC24V	RGBW
ARM-ING1000X100RGBAD2	L1000*W100*H80	15W	DC24V	RGBA